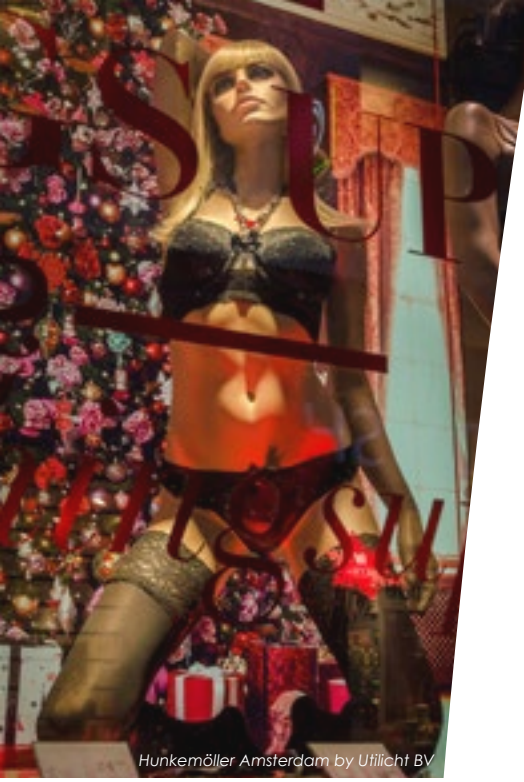


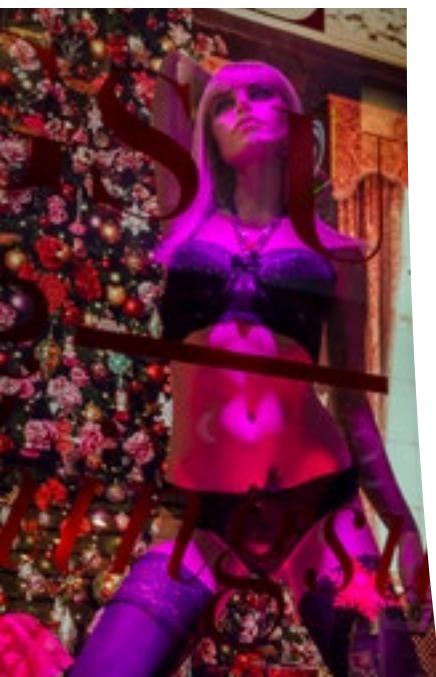
Masterspot Track 2



invisua
visual performance



Hunkemöller Amsterdam by Utilicht BV



truly unique experience

Imagine a pleasant, warm glow in your autumn-like window or perhaps a 'cold' shine on your collection of winter sports articles. Soft lights which transform your shop, restaurant or museum into an alluring destination. Unique subtleties which will give what's on display just a drop of extra appeal.

A dynamic light scene that continues after closing time and even into the night. You can even match your lighting to an outdoor event happening in front of your shop...



Selfridges Oxford Street London by Progress Lighting Ltd.

James Barnett
Production Manager Windows and Creative, Selfridges & Co:

"The magnificent lighting opportunities afforded by the Invisua Masterspot fixtures have really brought our Christmas window displays to life."

masterspot 2 track

Get introduced to the Masterspot 2 Track which fits every interior thanks to its slim, industrial look. With its luminous intensity of 35.000 cd (3200+ Lm) and its remarkable light quality (CRI 95, R9>90) this is the most powerful LED spotlight available, which makes it a real must-have product.

It's adjustable to every colour imaginable, whether it's clear white light or lively saturated colours. The Euro track compatible adapter makes installation a breeze, while the adjustable beam angle is a unique feature that generates an even stronger focus on specific elements.



- **Very high light quality (CRI 95, R9>90)**
- **Tunable white light (1,000K - 25,000K)**
- **Extremely powerful (35,000 cd)**
- **Saturated RGB colours**
- **Clear-cut shadows**
- **Adjustable beam angle (12 - 24°)**
- **Wireless control**



dynamic light scenes

With its creative light scenes the Masterspot 2 Track will provide a perfect presentation of your products. Thanks to its wireless control and an intuitive web-app dynamic lighting scenes are created with a flick of your finger.



visit our website
www.invisua.com

Matthijs Keuper
CEO & Founder, Invisua Lighting

"At Invisua Lighting we're convinced that dynamic lighting is an essential tool for defining the atmosphere on a certain location. The lighting should be adjusted to a specific time of the day or season. To make this possible, we've improved our innovative, dynamic lighting system to an even higher level."



invisua
visual performance

Invisua Lighting BV
Nuenenseweg 167-B23
5667 KP Geldrop, The Netherlands
+31 (0)40 - 737 01 90
info@invisua.com